



RAINFORREST



THE VERVE ESTATE, GOA
[BUILT IN 1925, REBORN IN 2024]



For bookings:

IG: [theverveestate.goa](#)

www.rftpm.in

Ph#: [+91 7774009988 /](tel:+917774009988)
[+919026659659](tel:+919026659659)





THE VERVE ESTATE, GOA

SIX SUITES, 40,000 SQ FT OF
LUXURIOUS, PERSONALISED STAY



All images are owned by the owners of The Verve Estate and cannot be replicated in
any medium without prior written permission

RAINFOREST

ABOUT

The VeRVe Estate is a century old grand Indo-Portuguese home, lovingly restored by its new owners, Rubeena Singh and Vivek Soni along with their daughter Valeska as their 'to-be' retirement home and christened as The VeRVe to capture the owner's initials. Both Mumbai based professionals, Rubeena and Vivek fell in love with this grand old home at first sight and post their purchase, set about the extensive and complex restoration of the main house, the adjacent staff block and the extensive outdoor space. This fine specimen of Indo-Portuguese architecture is one of the grandest old homes in North Goa. Built in the mid 1920's by Dr. Aquilino Almeida (one of the most famous doctors/surgeons of that era) in the peaceful locales of Vancio Vaddo, Guirim, the main house towers above the fields and garden space that envelope the house on three sides. Boasting of 26ft high ceilings, 55 cms thick walls, beautiful vintage flooring, and an impressive front porch lording over the fields opposite, this home was planned and built on a truly grand scale.



RAINFOREST



Location

Located just west of the Highway, The VerVe Estate has a great location, offering proximity to Mopa Airport, the culinary delights of Assagao, the gambling boats at Panjim and good medical facilities at Mapusa. Approximate travel time to key locations are as follows:

- Assagao — 5-10mins
- Panjim — 30mins
- Mapusa market — 5 mins
- Anjuna / Vagator beach — 20mins
- Mopa Airport — 25mins
- Moirá / Aldona - 10mins
- Highway — 2 mins
- Vision Hospital — 12 mins

If you like living close to the action and yet want to stay in midst of nature, then The VerVE Estate fits the bill.

RAINFORREST

The Estate Gardens

The VerVe Estate's outdoors and gardens are very different and have been crafted to give a very European feel. The grand entrance gates with large agave planters on the gate posts open into a classical herringbone-brick lined driveway lined with Juniper trees that makes its way to the main courtyard / roundabout island and the alighting point.



RAINFOREST

Lush, green lawns across two levels with flower beds, a koi pond, a beautiful garden path snaking its way through lots of flowering plants and a vintage, cast iron French fountain set the approach to the pool. Fruit bearing trees / plants on the Estate include coconut, passionfruit, banana, mango and guava.



The Estate has over 70 different varieties of unique plants / trees that are not normally seen in Goa.

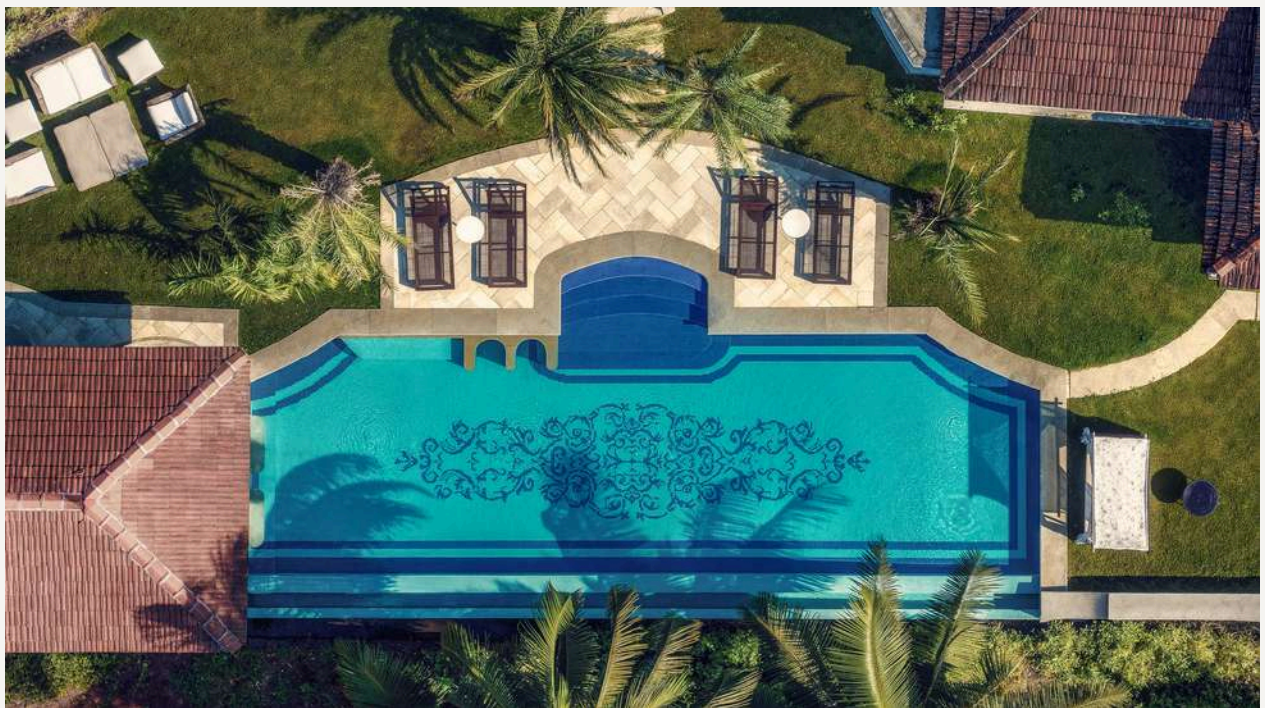
RAINFOREST



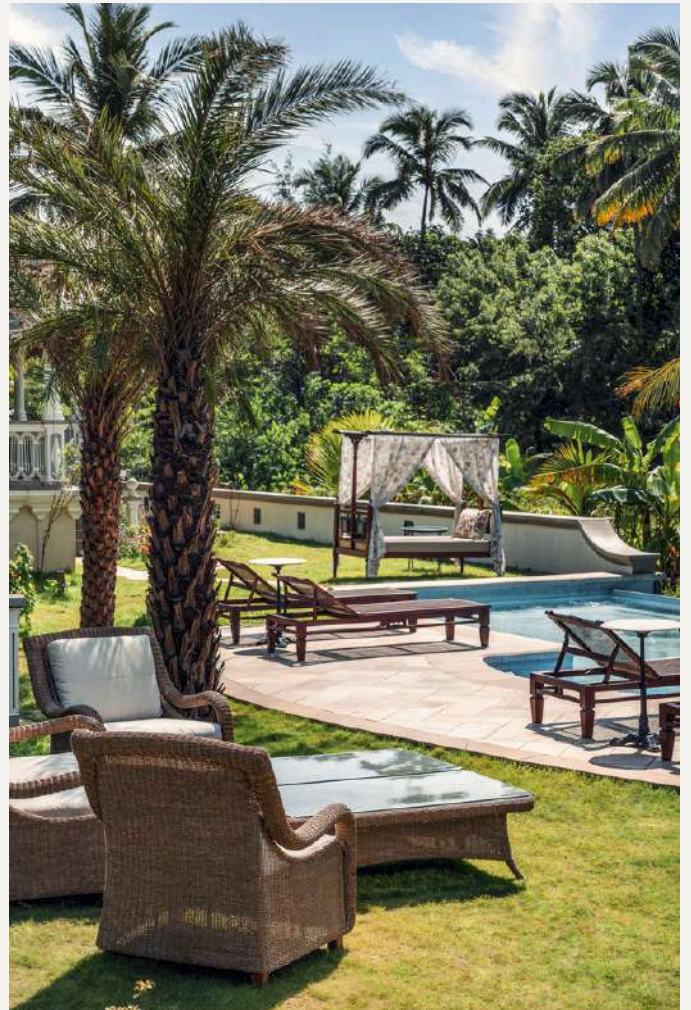
RAINFOREST

The Estate Pool

The VerVE Estate has a large, field touch, 50 ft x 17ft infinity edge temperature-controlled swimming pool. It's also the only private home heated pool in Goa with a swim-up bar and jacuzzi. The proximity of the pool and the Gazebo to the adjoining paddy field allows the guests at VerVe estate to truly enjoy tranquility in the midst of nature. The gardens at VerVe Estate abound with birds and butterflies offering an enchanting experience to its guests.



RAINFOREST



Main House

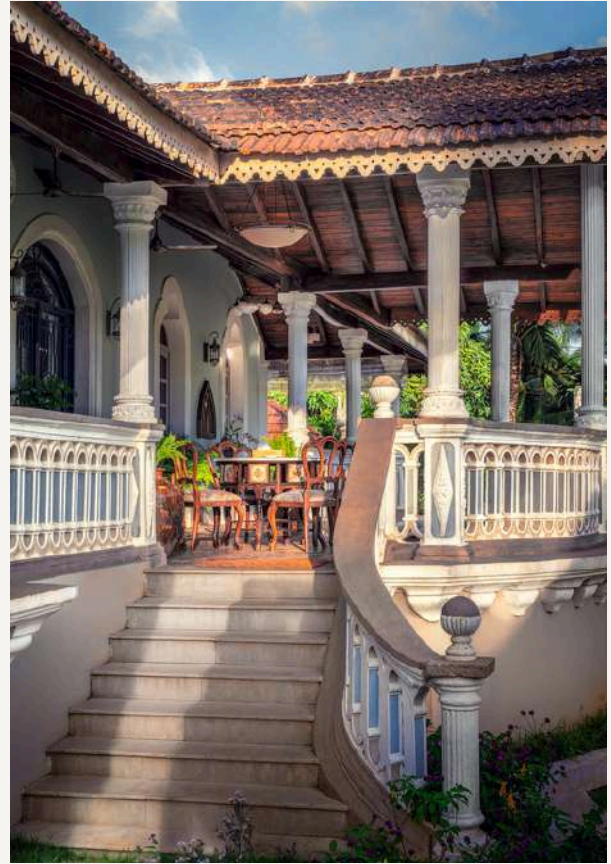
Passionately restored with incorporation of the finest materials and modern comforts, The VerVe Estate is now an uber-lux 6 suite home with ensuite bathrooms and has the capacity to accommodate 16 guests. All the rooms are large, spacious and are richly adorned with the finest art and period furniture, chandeliers and light fittings lovingly curated and styled by its co-owner Rubeena Singh (her label is #VerveCollective).

Every room and bathroom in the Estate is unique and comes with differentiated elements. The design language of the entire Estate has been crafted to seamlessly blend the newly built areas with the old, ones. The entire house gets a lot of natural light is well ventilated. It is centrally air-conditioned, with full power back-up.

RAINFOREST

Front Porch

The front porch offers magnificent views of the adjoining fields and coconut plantations and is the perfect place to enjoy a morning cup of coffee /tea and / or catch up on ones reading / relax and to catch the sunset. The columns, the roof, the old, restored railings, the flooring — all blend in very well with the period furniture and lights to evoke the grandeur of the Estate's high social status in the mid 1920's.



RAINFOREST

The Rear Veranda

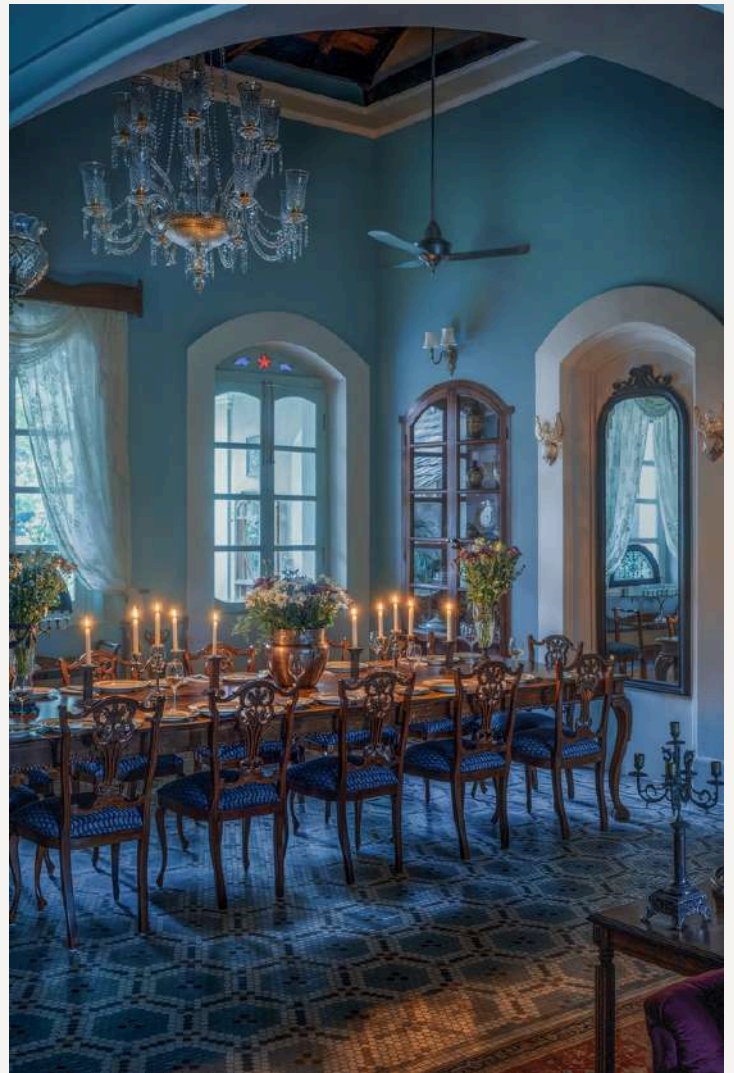
The rear Veranda interconnects the main entry of the villa, Kitchen, the two suites and the powder room with the main hall. Tastefully furnished, the length of the veranda is embellished with a hand painted mural in warm and soothing colours. The wall art and the large antique haveli mirror on the wall complements the flooring, furniture and the hand painted wall mural. This is one of the more popular spots in the Estate for our guests and has an unobstructed green view.

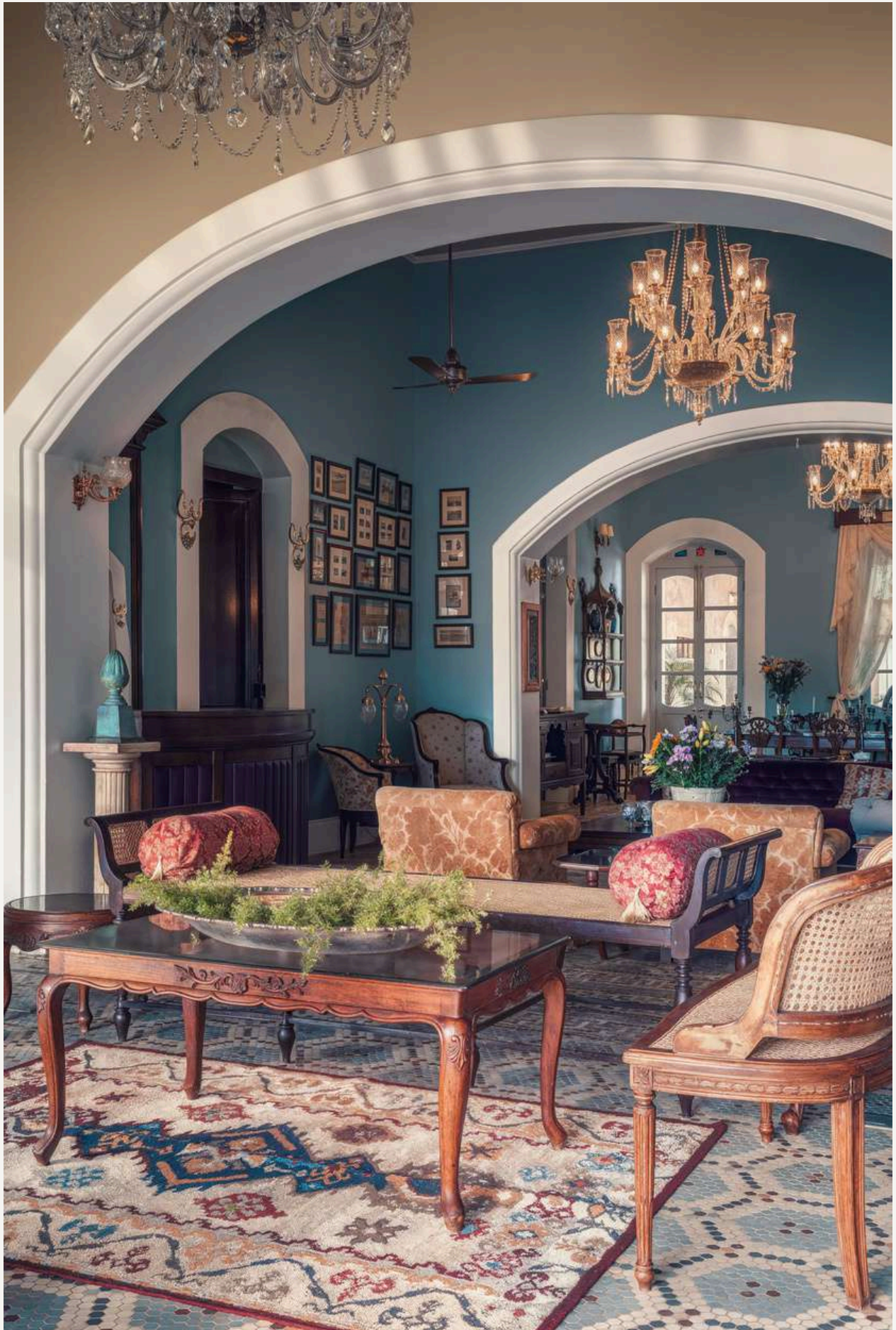


RAINFOREST

Main Hall

Spread over 1,200 sqft with 26ft high ceilings and bespoke mosaic flooring, the main hall is full of art objects collected from across the world, vintage chandeliers and antique light fittings and several memorabilia and antiques from Dr. Almeida's times. The main hall is split into three sections by two stately arches — The dining area (featuring a 14-seater dining table), the Library Bar and the Sun lounge.





RAINFOREST

The bespoke wood + leather bar opposite the book-shelf brings a 'colonial club' kind of vibe to this large space ,making it one of the most popular spots to enjoy drinks, music and hors d 'oeuvres with friends and family. The highlight is the extensive book collection curated by the owners.



RAINFOREST

The Master Suite

The Master Bedroom Suite spanning across 1,250 sq ft is one of the grandest suites in Goa (if not the country) and boasts of lovely vintage mosaics and period Belgian tiles on the flooring, 26ft high wood lined ceilings, antique light fittings and one of the finest collections of period furniture and objects d'art to seen in Goa. It has a 700sq ft plus master bedroom with 5 doors opening into 3 Juliet balconies and the front veranda, a 350sqft plus master dresser, with a full-sized pull-out bed adjoining a magnificent bay window and a large bathroom with twin basins, vintage cast iron tub and a shower enclosure. The entire design sensibility of the suite and bathroom has been crafted keeping in mind the old world charm of the place with a king size, four poster bed and an extensive collection of vintage botanicals framed in recycled teak.



RAINFOREST



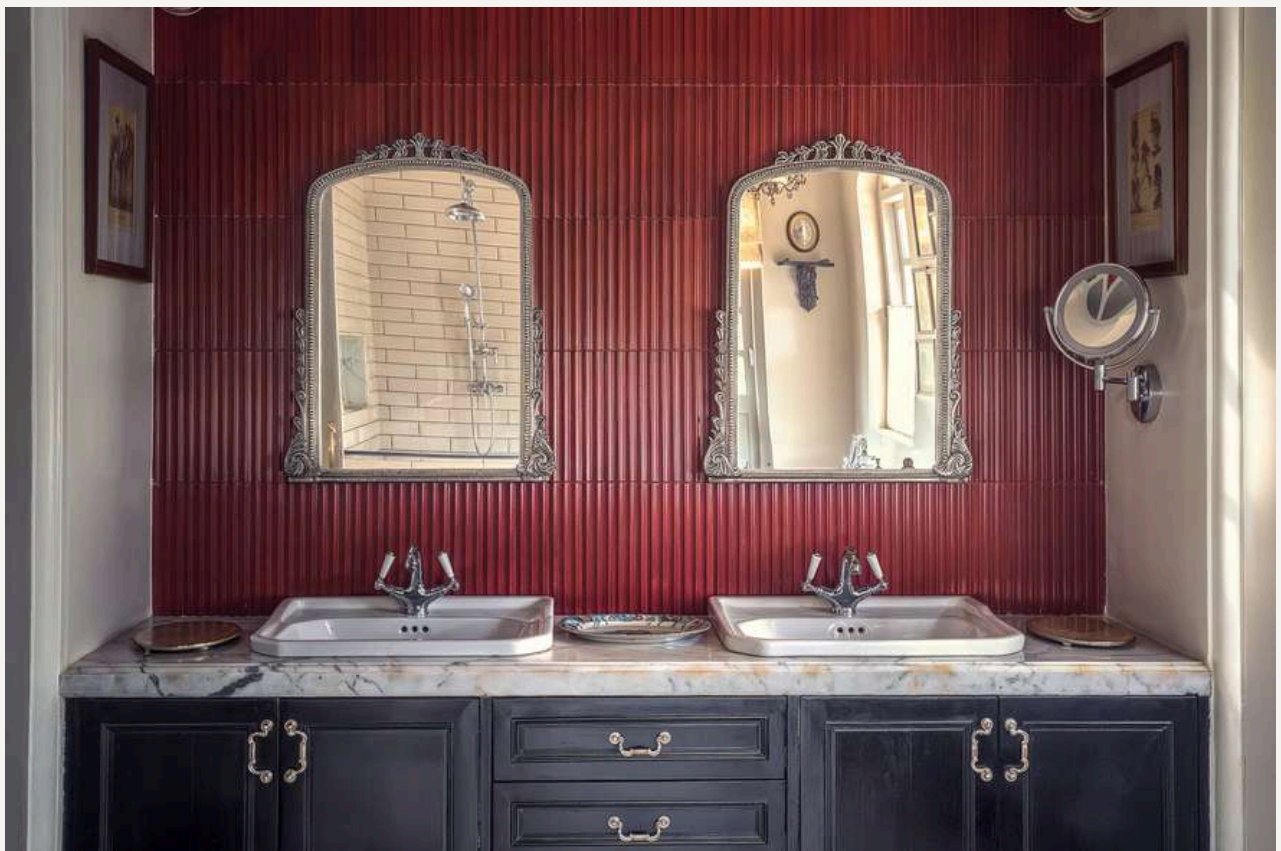
The large master bedroom has a four-seater sofa set, a reading nook, a writing desk and chair and a corner coffee table for two.

RAINFOREST

This 350 sq ft master dresser has several highlights including a hand carved, vintage full length mirror, a beautiful French dresser, a pullout bed by the bay window and large wardrobes available for use by guests. Several memorabilia and antiques are displayed in the show cabinets in the master dresser and bedroom.



RAINFOREST



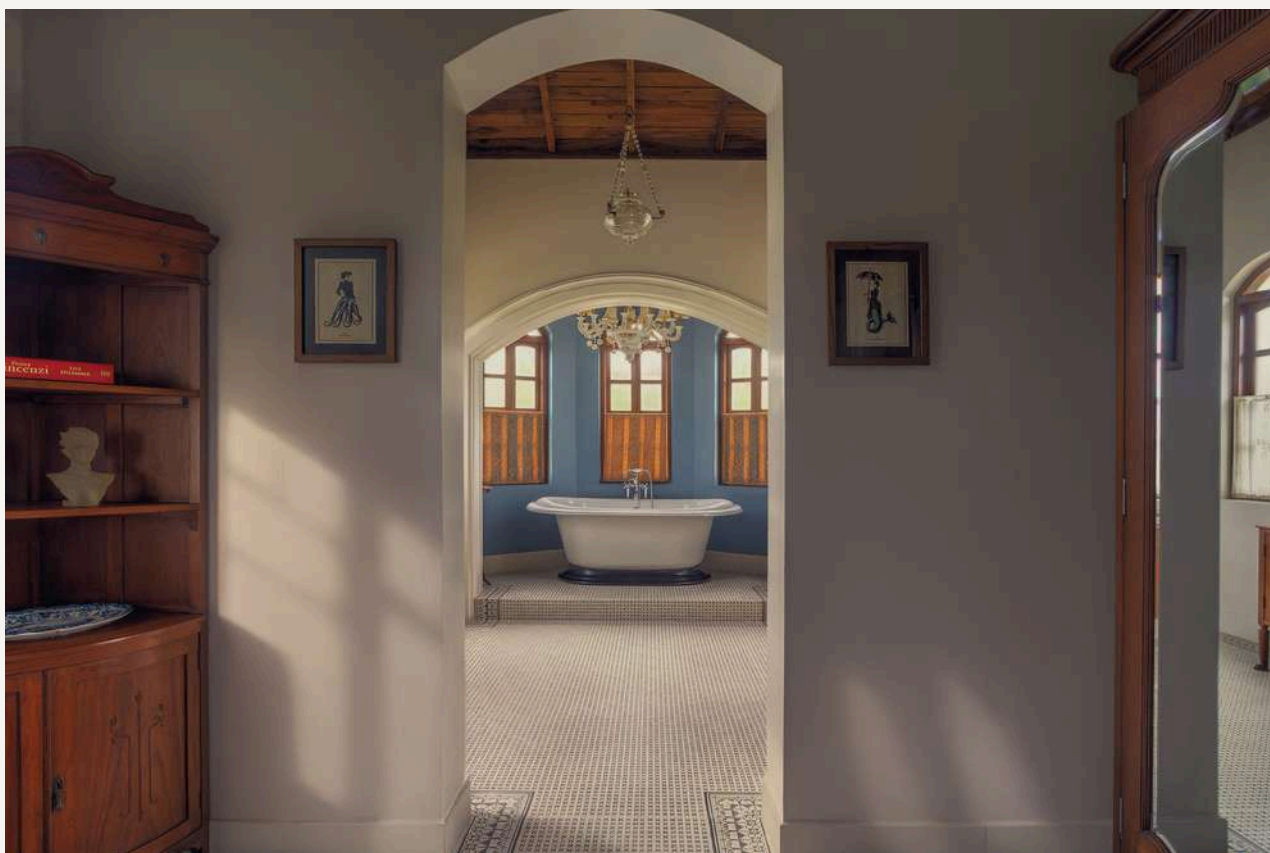
RAINFOREST

Suite 1

Suite 1 was designed to be Valeska's room and incorporates elements of her personality, such as her love for books, reading and birds. Spread over 700 sq ft, Suite 1 has a generously sized bedroom with large book shelves housing Valeska's personal book collection, a good-sized dressing room featuring a delicate French dresser unit, and a large bathroom highlighted by a large cast iron tub crowned by a vintage Capodimonte Italian porcelain chandelier and a shower enclosure in classical design. This room is very well lit, has 2 large doors opening onto the front porch and has the best views — of the fields in front and the swimming pool. The flooring of this suite as well as Suite 2 and 3 is 100-year-old, hand laid hexagon mosaic in bold yet warm colours that is the highlight of the west side of the house.



RAINFOREST



RAINFOREST

Suite 2

Suite 2 or the 'French Room' has the highest ceiling in the house. Spread over 550 sq ft, It is well anointed with period furniture designed in the 'French style'. The delicate design of the king-sized bed, the golden gilded mirror, the bed side lamps, the tapestry and the oil on canvas painting adorning the walls, the beautifully carved armchairs in the corner, they all hark back to a beautiful era gone by and compliment the lovely vintage flooring this Suite has been blessed with.



RAINFOREST



RAINFOREST

The dressing room and ensuite bathroom of Suite 2 is a treat to the eyes. The beautiful, old Portuguese doors crowned by coloured glass arches open onto the dressing room, where at the entrance, one is greeted by a beautiful, vintage Murano chandelier, a period teak wood cabinet with a full-length mirror and lovely consoles. The dressing room is well lit by light streaming in from windows on both sides. The floor in the dressing room and the bathroom are made of large format, polished marble mosaic, hand cut at site by skilled artisans. The delicate French wooden console has been re-purposed to house the basin, flanked by an authentic antique towel stand sourced from the vintage bazaars of Calcutta.

The light fittings, the faucets, the wall art, everything has been carefully chosen to blend well with the aesthetic sensibilities of this old house.



RAINFOREST



The highlight of Suite 2 is the open-air spa courtyard accessed through the dressing room that is private to this suite and features a vintage cast iron bathing tub with its original enamel coating. A great place to soak in a luxurious bath under the stars, entertained by the nighttime music played by the resident insects and birds at the Verve Estate Gardens.



RAINFOREST

Suite 3

The over 120-year-old rosewood, four poster bed in this suite is its imposing highlight. It's a very high bed and requires usage of the well-placed teak wood step ups to hop aboard and makes its occupants feel truly special. Bedside lamps are vintage, brass moving wall lights sourced by the owners from Lisbon. This suite also has a vintage, teak, hand carved full-length mirror, with a lovely armchair by the window to sit and relax / read a book sourced from the Estate's extensive library.



RAINFOREST



Opposite the bed is a vintage show case, that was Dr Almeida's medicine cabinet, housing his surgical tools and medicines. It was found in a state of acute distress by the owners when they first saw the property and has been painstakingly restored to display objects d'art collected by the owners over the years. Up high on the wall above the show cabinet hangs a large, oriental, multi-medium relief work reflecting the delicate setting of flora and fauna in a Chinese garden.

The two-seater sofa in the corner flanked by a beautiful lamp on the side and a lovely brass table in front complete the warm and distinctive setting of this suite.

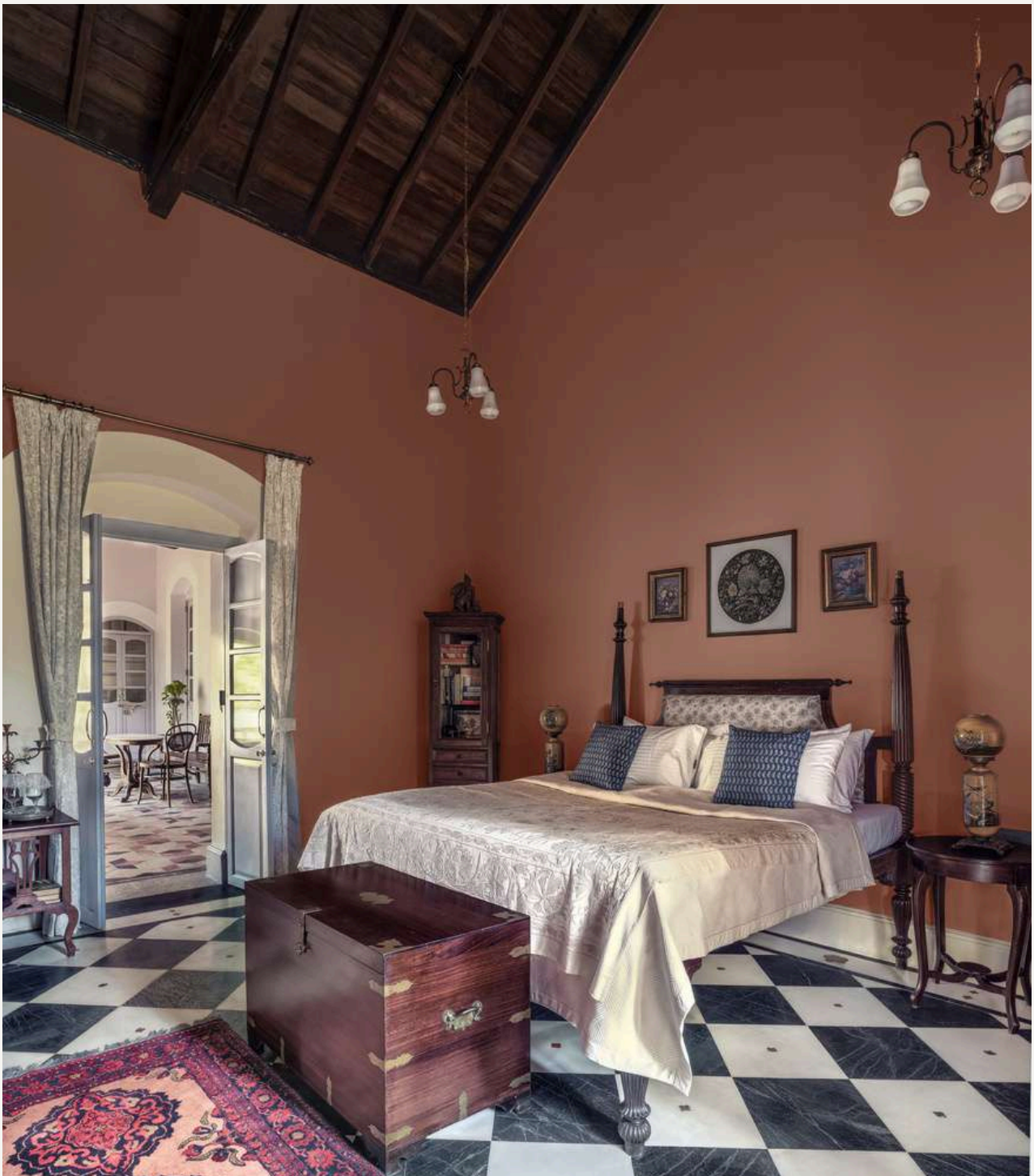
RAINFOREST



RAINFOREST

Suite 4

Entry to this suite is from the rear veranda which is a popular spot with our guests. This suite has a distinctive coral colour palette, contrasted by a hand laid, marble, checkerboard flooring, embellished by hand cut floral inlays in red stone. Its beautifully furnished, has a large, vintage bed, flanked by 2 exquisite table lamps (repurposed kerosene lamps) atop delicately carved bed side tables. The light fittings in this suite are again, old, vintage ones carefully curated by the owners over the years.



RAINFOREST

This suite offers direct access to the Estate Gardens and has its own private garden seating to enjoy that peaceful cup of tea / coffee / drink along with your partner. The garden access door opens directly opposite to the fountain on the west side of the Estate.



RAINFOREST

The ensuite bathroom features a large, vintage mirror framed in Italian rococo style metal work and grey stone basin atop a long, repurposed, teak wood console, flanked by vintage chinse ceramic pots and indoor plants. The flooring is done in warm colours featuring laser cut tiled mosaic in green and beige and the walls of the bathroom are grey limestone plaster. The small arch on the left houses the shower stall, again this area gets a lot of natural light thanks to the large windows that open into the garden.



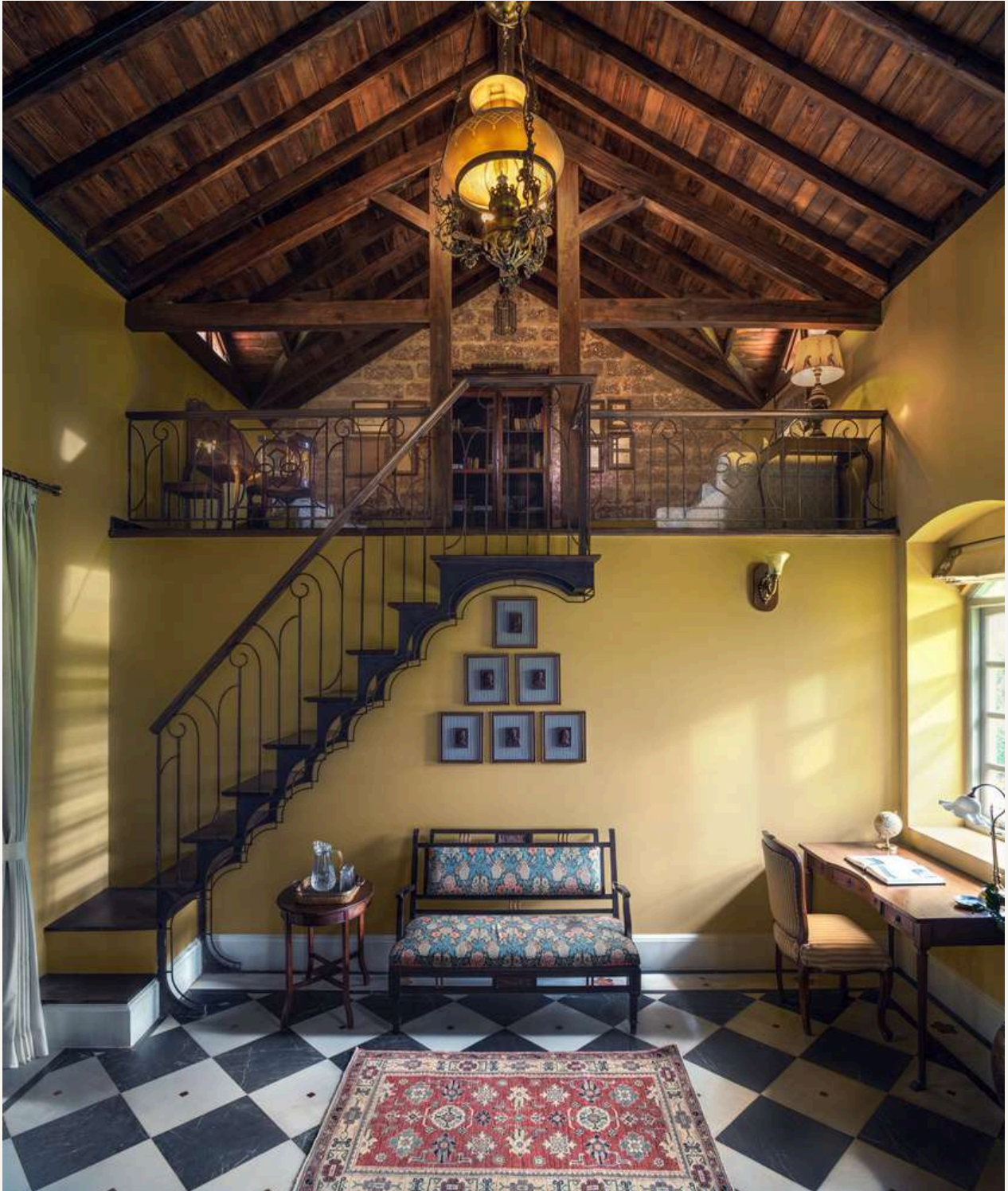
Suite 5

Entrance to this suite is also via the rear veranda — this suite is over 600sq ft and is one of the most unique rooms you will experience in India. Originally the kitchen of the old house, this room underwent a significant restoration to get to its current shape. This suite features a queen-sized metal bed, flanked by marble top side tables and a large teakwood cupboard, located next to the garden access / private garden seating area. The checkerboard flooring is identical to the one in Suite 4 and blends beautifully with the inlay pattern flooring in the ensuite bathroom.



RAINFOREST

To the left of the suite entrance is a loft that is extremely popular. Built at a height of over 10 feet, this loft is accessed via a custom-built metal / wood staircase.



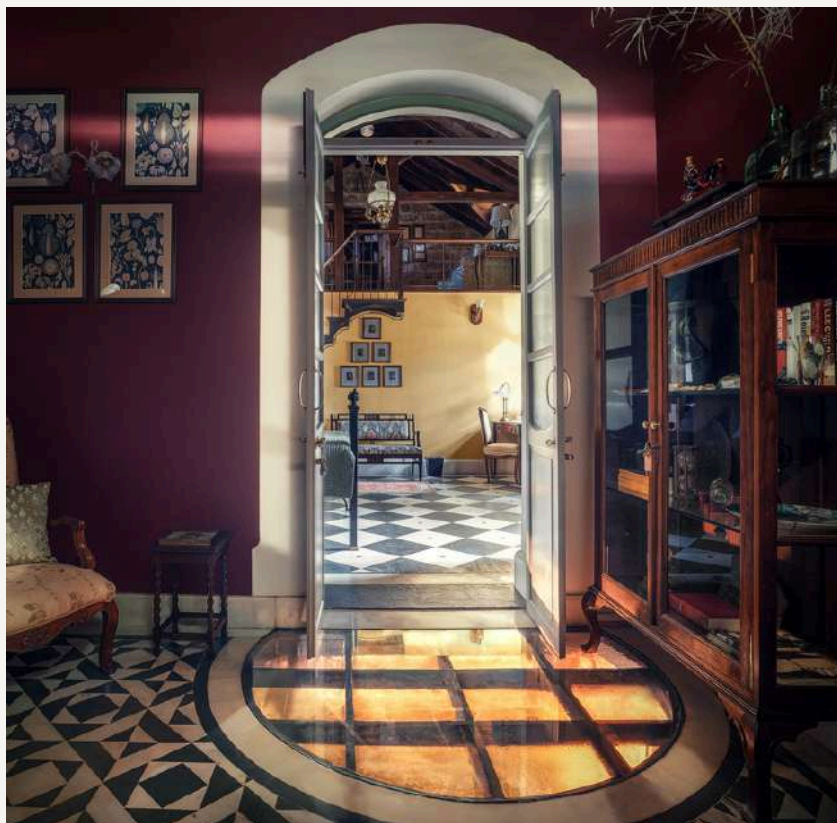
RAINFOREST

The loft is well lit via two dormer windows, and is well furnished with a vintage folding desk and study chair, a full-sized sofa cum bed, a comfortable reading armchair sofa and a beautiful bookcase full of board games and children books. The exposed laterite wall is adorned with memorabilia documenting the life and times of Dr. Almeida in the period 1920-1950's.



RAINFOREST

This ensuite bathroom is one of the most beautiful and unique bathrooms one will find in the country. The key highlight is the old well, which once served the kitchen of the house (now suite 5 bedroom). As the house was extended, the old well was made a design feature, now covered by toughened glass, and reinforced by a safety metal frame. This well is used to irrigate the gardens and when lit, adds a different dimension to this large bathroom bathed in a royal deep maroon colour palette.



RAINFOREST

Other areas of the Estate
Powder room



Pool bathroom



RAINFOREST

Kitchen



RAINFOREST



RAINFOREST

Senior Citizen friendly

The design layout of the entire house is very inclusive and is wheel-chair friendly.

The main house has a wheelchair ramp and the swimming pool with a gentle gradient, in pool sitting and steps for easy ingress and egress is designed to be senior- citizen friendly.

Sustainability

The VeRVE Estate is one of the most sustainable homes in Goa with a very modest carbon footprint. The owners have gone out of their way to re-use and repurpose old materials when restoring the house. None of the old areas were demolished, care has been taken to reuse every inch of the old space. All the wood used in the house for the doors, windows, roof lining is old, seasoned and repurposed local wood. Most of the furniture and light fittings are old, vintage pieces curated and collected by the owners over the years. All the wall art is framed using reclaimed teak wood. The entire plot is built on a large aquifer tapped by two old and now restored wells. The driveway and external landscapes have been built on geo-cells to allow the restoration of ground water levels with every rainfall. The gardens are irrigated by well water and the PwD water used in the house and the kitchen makes its way to the treatment plant before being reused in the gardens.

PS:

Keeping in mind the busy schedules of our readers, we have attempted to include only the wide, angle photographs that give an idea of the size and scale of this house and its many layers of character and history. Truth be told, the house has far too many details to attempt capture in a 30-40 page booklet.

While the main house and the Estate are extremely photogenic, we believe that pictures and video's fail miserably at capturing the grandeur and magnificence of this grand home now beautifully restored. We strongly encourage our readers to come and experience The VeRVE Estate and discover its hidden charms and multi-faceted personality.

FACT SHEET

Independent stand-alone villa with private access
Large field touch 4,000 sq meter plot
6 suites, 8 bathrooms

Check-in: 2 pm
Check-out: 11 am

Rs.1,50,000/- damage security deposit

No Pets Allowed

Location: 10 mins to Assagao, 5 mins from Mapusa. Location
Pin will be shared on booking confirmation

INCLUSIONS :

Private heated pool with jacuzzi and swim-up bar / gazebo

Smallest suite — 500 sq ft, largest suite — 1,250 sq ft

2 extra beds, 16 pax capacity

Large, expansive unique gardens 100 plus variety of plants / trees

Fully staffed with Chef + 10 live in staff

High-speed Wi-Fi

Central Air Conditioning

24 x 7 100% power back up

Housekeeping

Property Manager

Luxury Concierge service on call including massages / restaurant

bookings / car rental / Yacht booking etc.

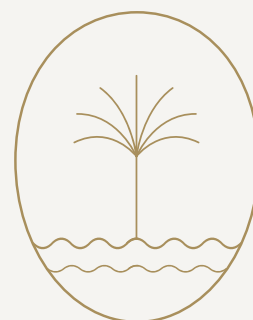
Upto 2 guest staff can stay in the Estate staff block for a nominal fees

RAINFOREST

BREAKFAST

The Verve Estate

OFF ASSAGAO, NORTH GOA



Fresh fruits

Papaya

Watermelon

Banana

Apple

Grapes

Juices

Pineapple

Watermelon

Orange

lemon juices

Other fruits (Subject to availability)

Choice of Cereal

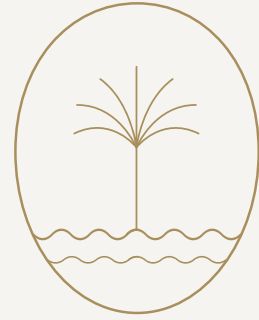
(Muesli, Corn Flakes, Choco's etc)

Please let the attendant know of any food allergies or special dietary needs

RAINFOREST

The Verve Estate

OFF ASSAGAO, NORTH GOA



Basket of breads

Sliced white bread

Sliced brown bread

Sourdough bread

Goan poie

Pound cake

Eggs to Order

Eggs Benedict

Omelette

(Fluffy, Cheese, Masala, Plain etc)

Poached Eggs

Sunny Side up

Bolied

scrambled

Sides

Grilled tomatoes

Pan fried chicken sausage

Chicken salami

Ham

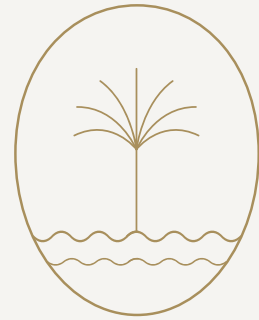
Bacon

Goan sausage chilli fry

RAINFOREST

The Verve Estate

OFF ASSAGAO, NORTH GOA



Indian Breakfast

Puri Bhaji

Chole bhature

Stuffed Paratha (Aloo, gobi, paneer, onion, Methi)

Poha

Idli (Served with Sambhar & Chutney)

Dosa (Served with Sambhar & Chutney)

Uttapam (plain/tomato/onion)

On the Table

Potato wedges with grilled tomato & hashbrown potato

Baked beans /Spicy baked beans with toast

chilli cheese toast

Pancake with maple syrup and honey

French toast with maple syrup and honey

Tea & Coffee

Masala Chai

Lemon Tea

Green Tea

Black Coffee

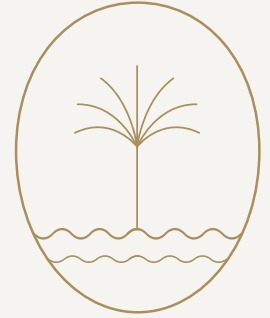
Home Made Coffee

RAINFOREST

HOUSE RULES

The Verve Estate

OFF ASSAGAO, NORTH GOA



Dear Guests,

Welcome to The Verve Estate! You're in for an exceptional holiday. We look forward to hosting you while you create everlasting memories!

For anything concerning your stay please feel free to contact our Property Manager.

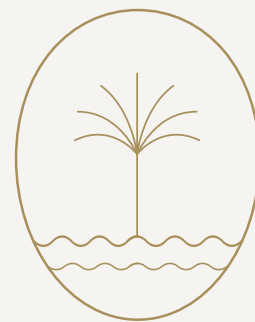
Stay with Love and Safety!

- It is not allowed to include more people in the rental property than stated in the booking confirmation. Extra charges will apply at ₹ 15,000 per person per night, if at all it is within the hosting capacity of the villa.
- Use safety lockers for valuables. The management and staff are unable to assume responsibility in case of any misplaced items.
- If any keys are lost, the lock cylinders will be replaced by the locksmith for safety reasons and same will be billed as actuals.
- All staff must have at least 10 hours per 24 hours rest time. From 1 am to 7 am, all staff must retire to their rooms.

RAINFOREST

The Verve Estate

OFF ASSAGAO, NORTH GOA



Enjoy awesome food!

- Our Chef is at your service! Ingredients & groceries will be charged as per actuals with bills provided to you based on your demand or kitchen requirements for your preferred food. Please refer to the list of what our chef is best at. We provide one grocery run free of charge per day.
- Restaurants of Goa are happy to deliver food for you or to host you. Please call / WhatsApp our concierge team for reservations.

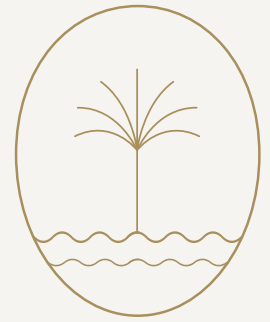
Stay with Responsibility!

- Windows and doors should be closed unless needed to open (mosquitoes!). All lights and electronic devices turned off when not in use is a great habit of most guests. We appreciate it!
- We are sure you understand any damages are deductible from your security deposits.
- No smoking inside the villa, however you can smoke in the balconies and the outside areas.
- On an occasion where any pollutants (we once had fire crackers make a mess!) food or drink have fallen into the pool, the pool cleaning charge of ₹ 25,000 rupees is chargeable as it involves professional help, chemicals, water tankers.
- Please don't move any indoor furniture outside to avoid any damages to your account.
- Please refrain from moving any furniture on your own and ask house staff to help.

RAINFOREST

The Verve Estate

OFF ASSAGAO, NORTH GOA



- Please don't put any decoration items that tamper with anything on the property.
- Please don't bring flammable or explosive materials and objects with unpleasant smell into the villa premises. Strictly no drugs, or any illegal/immoral activities.
- This villa does **not permit** any sort of parties/events, however we can help you organise sit-down dinners or barbecues with on call chefs and a guest count not exceeding more than 4 people with **prior permission**.
- Music has to be taken **inside** the villa between **10:00 pm - 08:00 am**. It is **legally disallowed** and neighbours have a right to their peaceful rest while you enjoy your vacation. Our official permission to run a rental villa obliges us to follow the rules. Your cooperation and understanding is appreciated.
- We have an open pool and no life guard on duty, the owners/management company cannot be held responsible for any mishap especially relating to children.
- Use the furniture only after you've dried yourself up completely after pool.
- We encourage our guests to not use and discard the towels, water conservation is our top priority.
- Taking pool towels or other villa property out of the Estate is not allowed.
- Guest staff of up to 2 pax can be accomodated in our staff block for an extra fees of Rs 1,000 per person per night. Guest staff is not allowed to stay overnight in the main house.

We believe you have signed the Pool Waiver Form and Terms & Conditions for a comfortable stay. We request your fellow travellers comply with the rental conditions too.

- The Verve Estate

(Rainforest & Talisman Property Management)

RAINFOREST



THE VERVE ESTATE, GOA
[BUILT IN 1925, REBORN IN 2024]



For bookings:
IG: theverveestate.goa
www.rftpm.in
Ph#: +91 7774009988 /
+919026659659